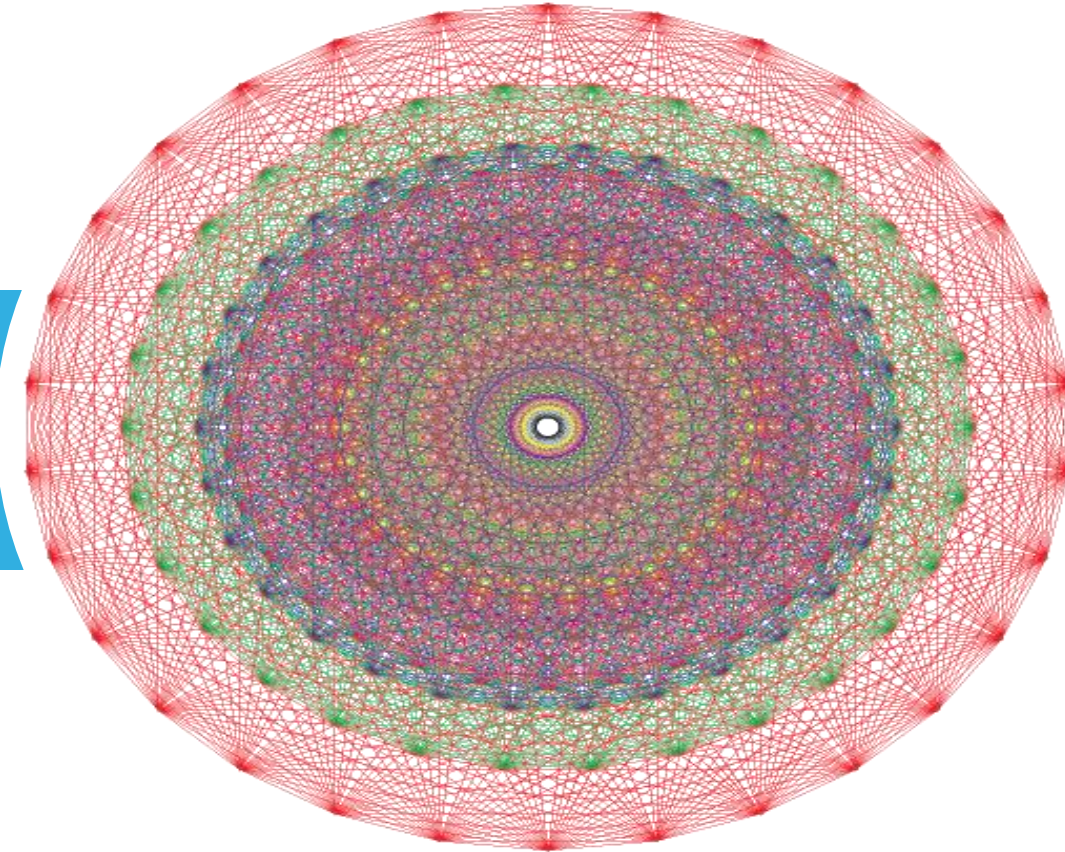


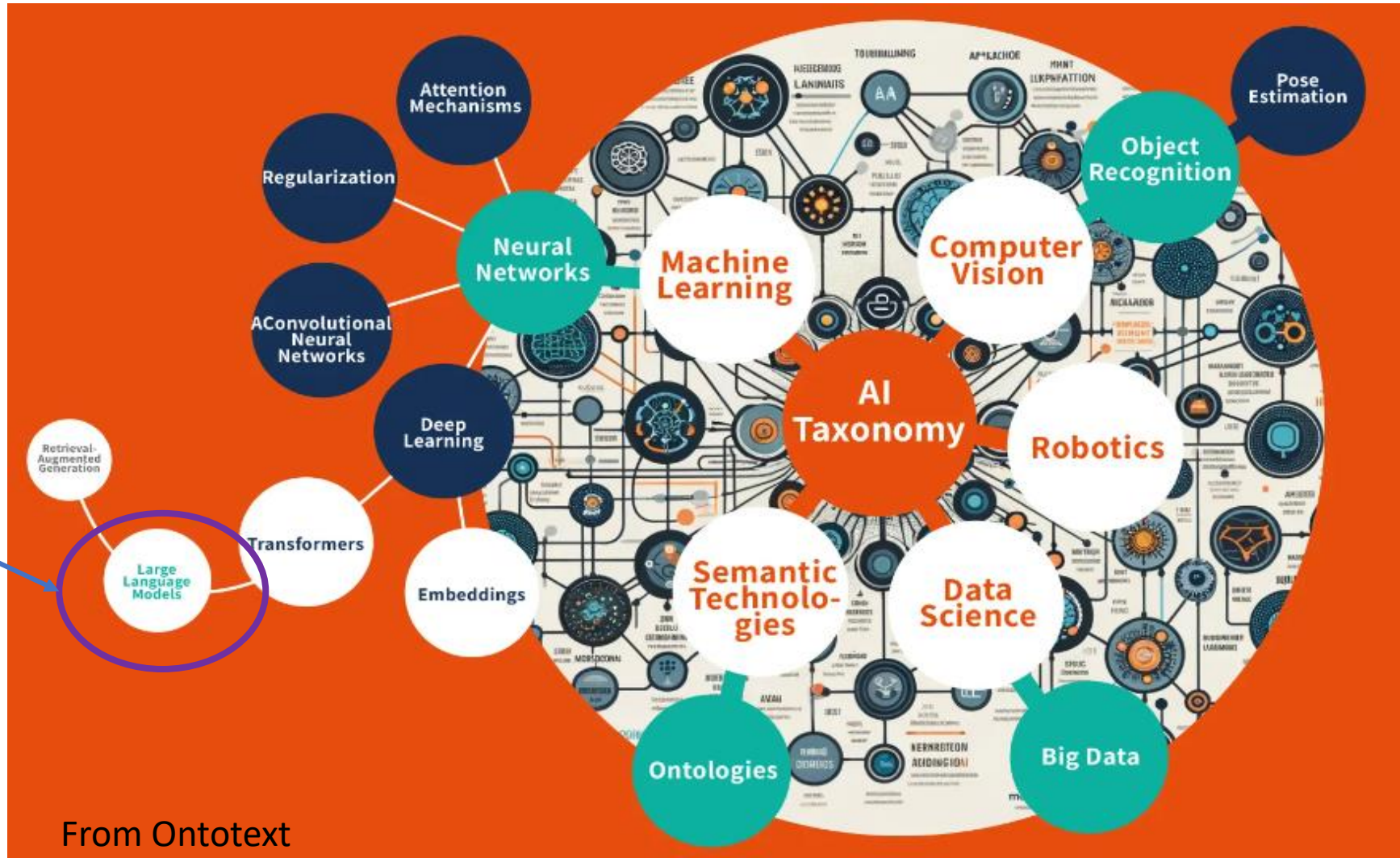
## LEVERAGING DIGITALIZATION AND AI FOR ADVANCING SUSTAINABLE PRACTICES IN ISLAMIC FINANCE



Ts. Dr. Othman Abdullah, CPIF  
CEO, Islamic Finance  
Silverlake

6th October 2024

# Artificial Intelligence Taxonomy



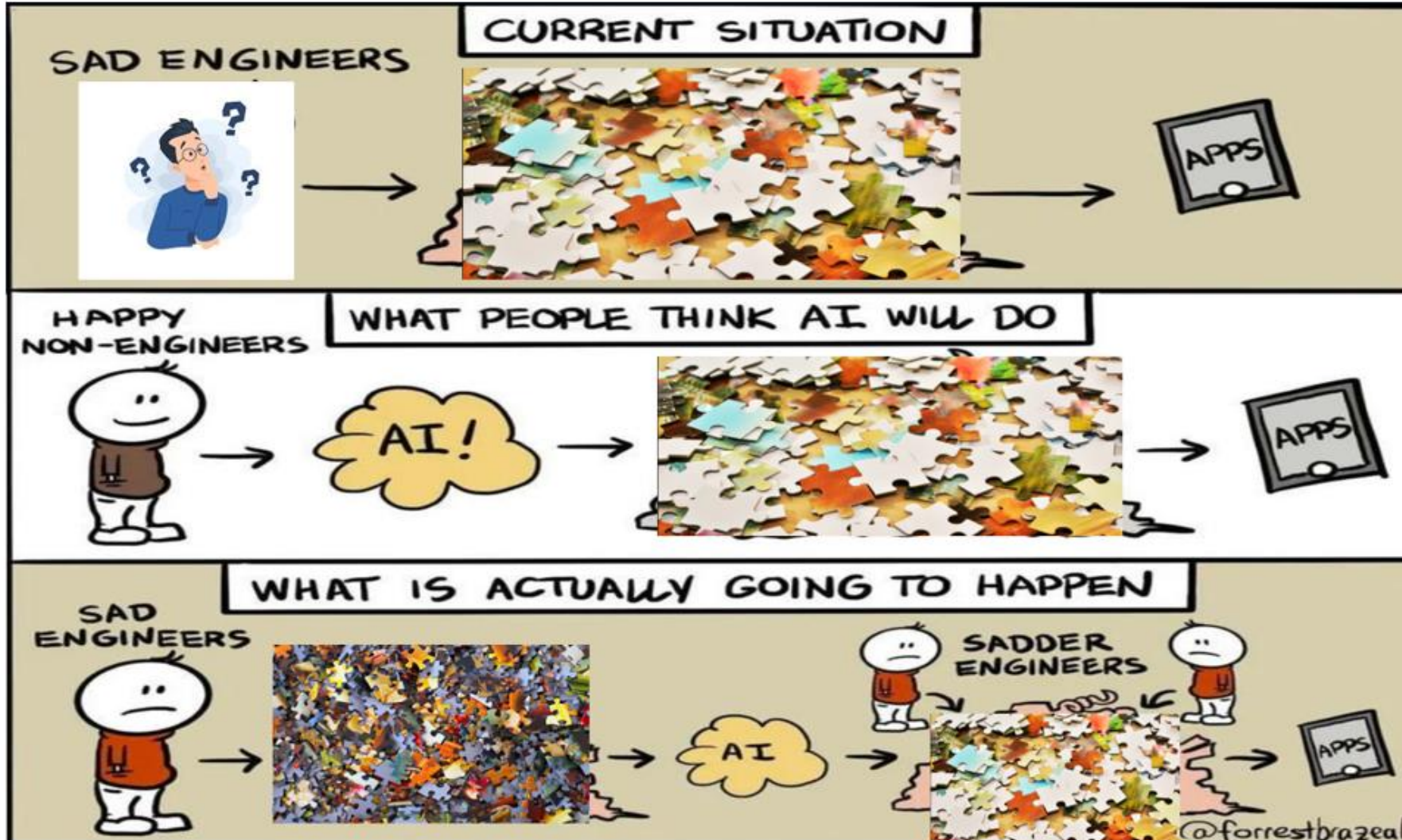
This Is LLM  
The 'Touch  
Screen' of AI

From Ontotext

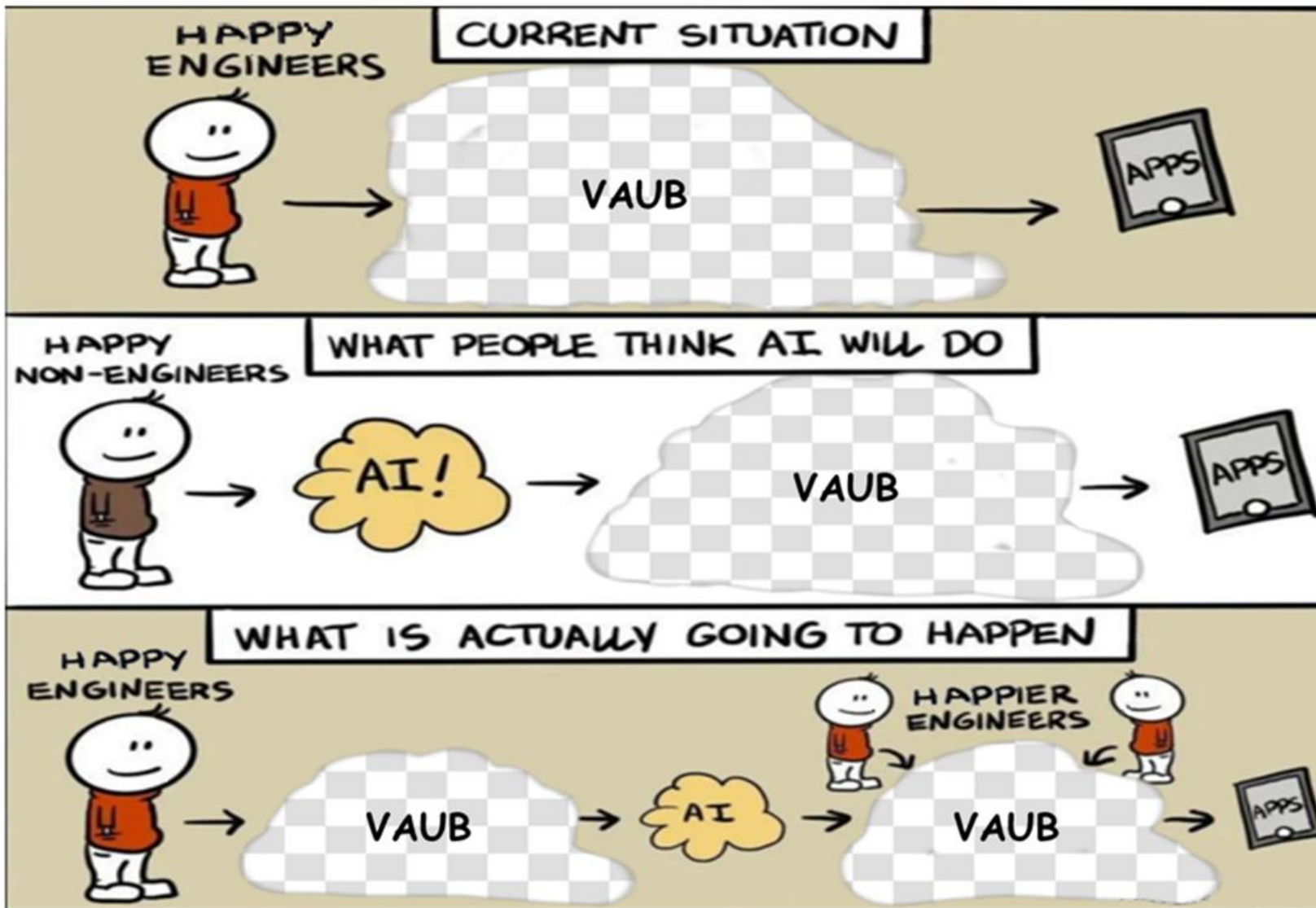
# The Tyranny of Choice

Logic suggests that having options allows people to select precisely what makes them happiest. But, as studies show, abundant choice often makes for misery

Quoted from Scientific American



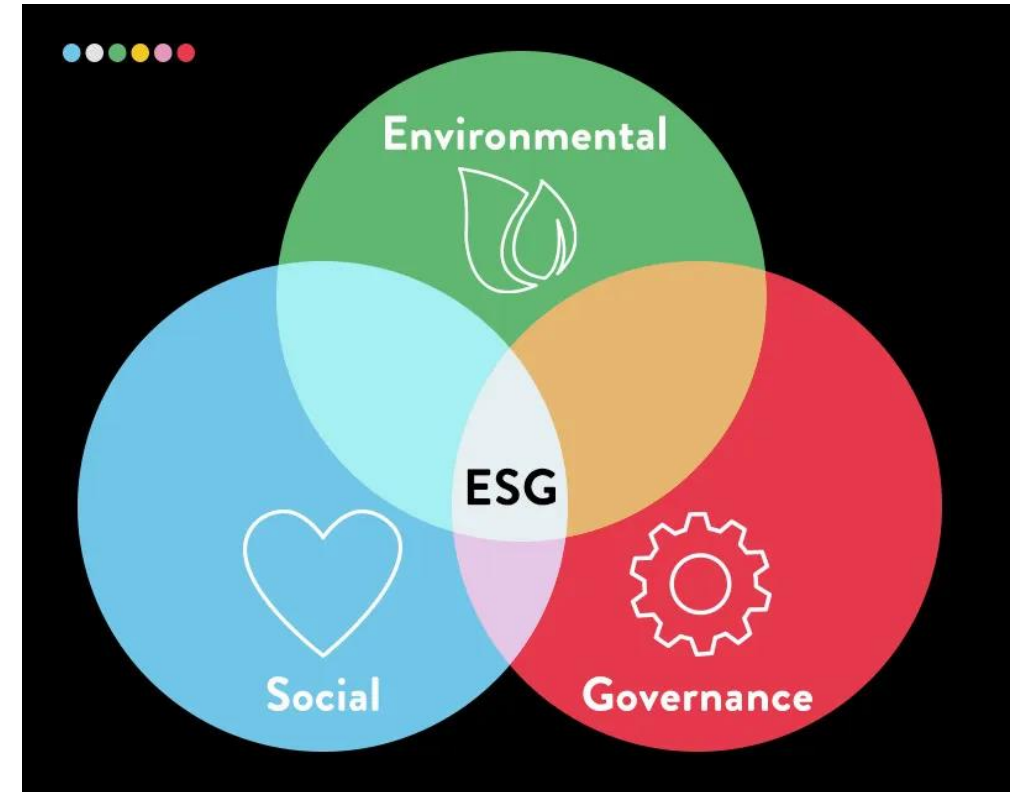
# VAUB : [Variable Hosts] [AI Aided] [Unified] [Business Delivery] – The Reimagined Solution



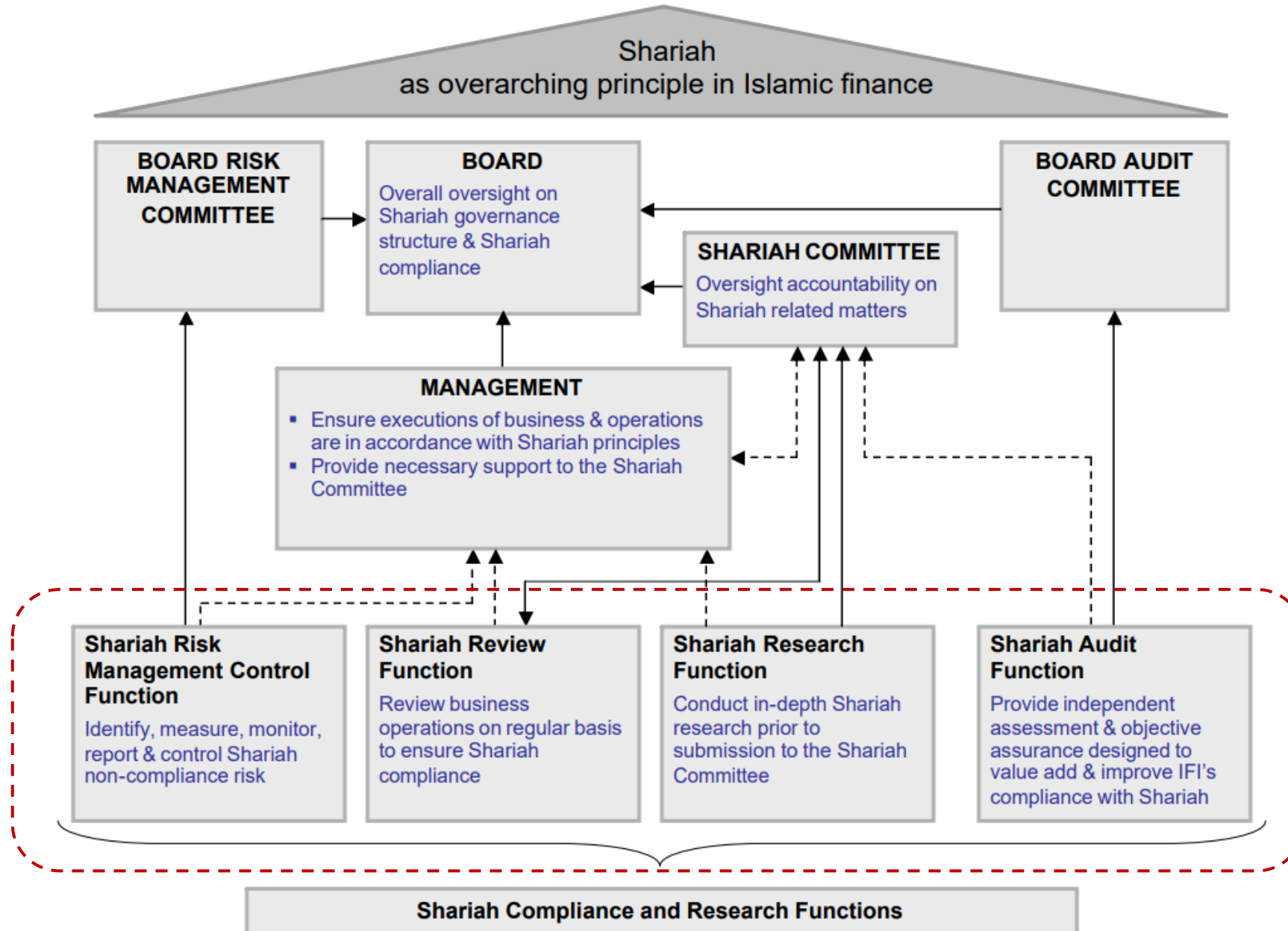
VAUB is a new product from Silverlake incorporating LLM and Category AI.

## ESG and Sustainability

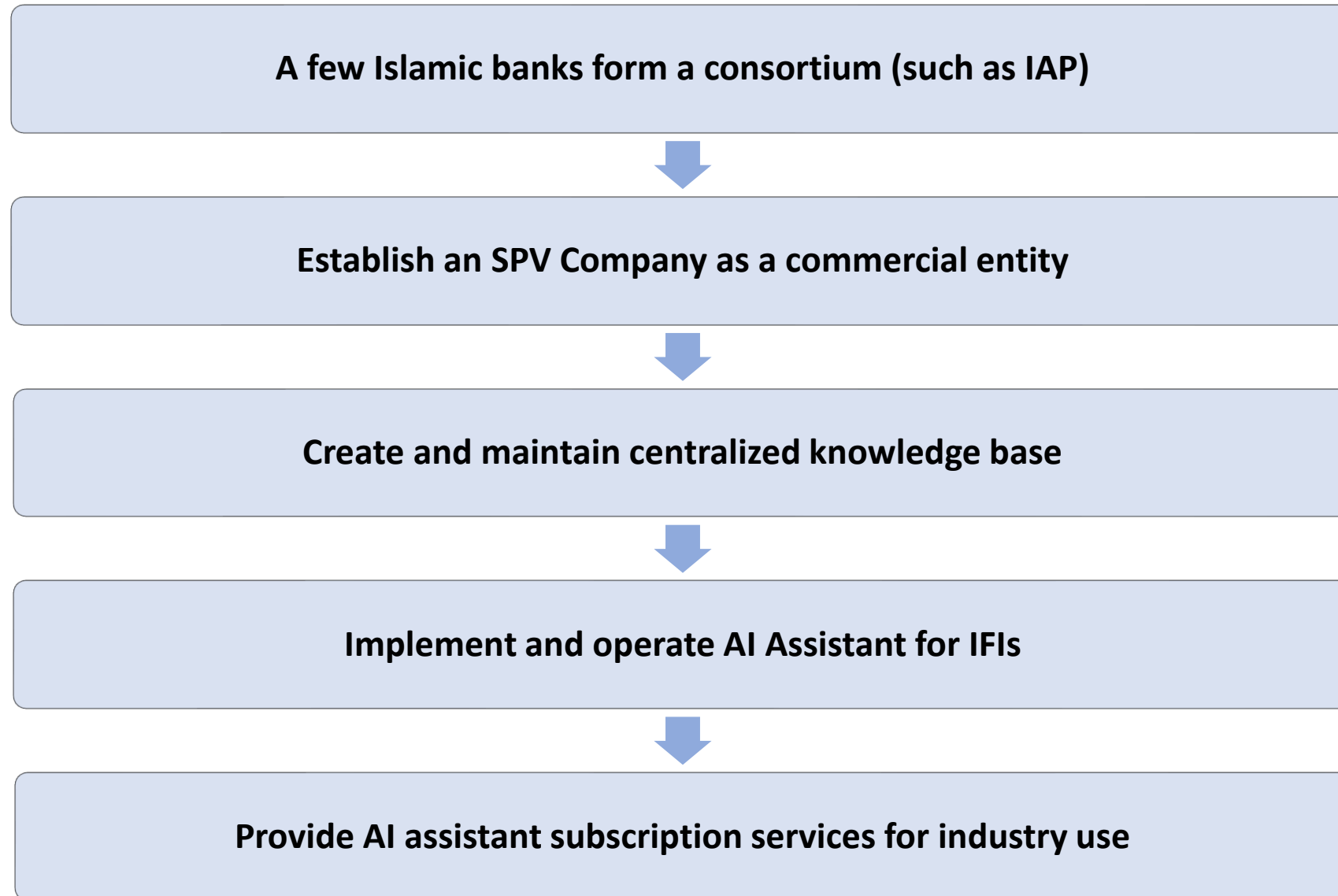
- ESG focuses on a company's environmental, social, and governance practices.
- Sustainability encompasses broader goals of long-term ecological, social, and economic health.
- **ESG is a tool within the broader context of sustainability** to assess and guide corporate behavior.



# BNM Shariah Governance Framework (2010)



## Recommendations for Industry Owned AI Assistant Initiatives



# People and Process Changes are Critical Success Factors

While data and technology are important for any AI transformation, the **people and process changes** are proven to be **the most critical factors to succeed**

10%

Algorithms

Generative AI models

20%

Technology / IT

Data platforms, data quality, & availability  
Visualization tools

70%

Processes, People & Culture

Future of work design  
Ways of working & business process design  
Org design & talent and skills  
Change management and communication



Thank  
you

